

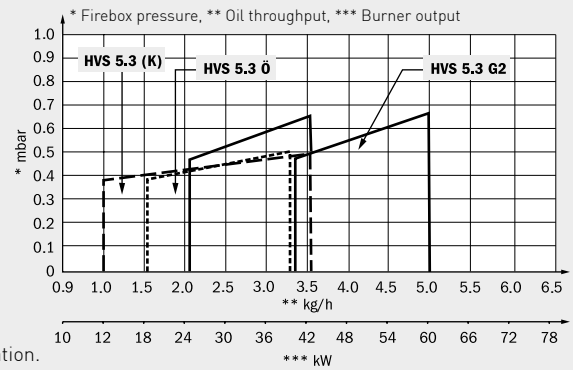
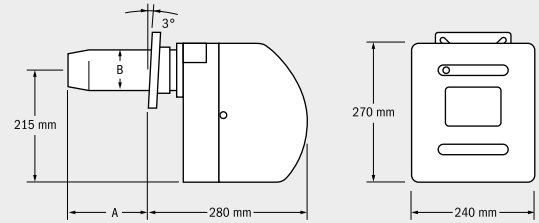
## Series 5 Oil burner



12 - 60 kW



Yellow flame burner, 1-stage with oil preheater, solenoid valve, nozzle (HVS 5.3 K without nozzle), integrated function indicator lamps and sound insulation.



### Series 5 oil-fired forced draught burner

Series 5 oil-fired forced draught burners are characterised by their very low running noise and their environmentally friendly combustion. They are tested and approved to EN 267 and the 1st BimSchV, are suitable for burning EL heating oil to DIN 51603 with max. 6.0 cSt/293 K (50 °C).

With a built-in oil preheating system, uniform fuel temperature and optimum atomisation of the fuel is ensured. The air closure damper prevents fast cooling of the combustion chamber when the appliance is at a standstill. An optimised, high-performance fan ensures reliable starting and stable combustion. The intake and discharge end air control ensures precise air rate adjustment, even in the lower output ranges, and the precision mixer ensures easy but exact setting of the oil-air mix ratio. Furthermore, the patented quick release system, practical maintenance positions and variable installation depth by means of a standard sliding flange ensure easy handling.

Model	HVS 5.3 K	HVS 5.3	HVS 5.3 G2	HVS 5.3 Ö
Flame tube	120 mm	172 mm	172 mm	174.5 mm
BimSchV	1st BimSchV	1st BimSchV	1st BimSchV	1st BimSchV
Burner output	12 - 43 kW	13 - 42 kW	40 - 60 kW	19 - 40 kW
Oil throughput	1.3 - 3.5 kg / h	1.3 - 3.5 kg / h	3.3 - 5.0 kg / h	1.5 - 3.3 kg / h
Power consumption	approx. 160 W	approx. 160 W	approx. 160 W	approx. 160 W
Mains connection	230 V / 50 Hz	230 V / 50 Hz	230 V / 50 Hz	230 V / 50 Hz
Weight	11.9 kg	12.0 kg	12.0 kg	11.9 kg
(A) Plug-in unit depth	60 - 80 mm	60 - 130 mm	60 - 80 mm	60 - 130 mm
(B) Flame tube diameter	80 mm	80 mm	90 mm	80 mm
Order number	1000005	1000029	1000031	1000030
<b>Price/€</b>	<b>933.00</b>	<b>979.00</b>	<b>1,043.00</b>	<b>979.00</b>

Options	Additional charge/€
Hot air type*	146.00

\* with LM 044 automatic burner control for operation on a hot air heater